

PARKS AND RECREATION GO BOND NEIGHBORHOOD PARKS UPDATE

APRIL 14, 2021



LEGEND

VEHICULAR USE ELEMENTS

- A1 PAVED PARKING
- A2 GRASS OVERFLOW PARKING
- A3 BOAT TRAILER PARKING

PEDESTRIAN ELEMENTS

- B1 MULTI-USE PATH (10 FEET)
- B2 WALKING PATH (6 FEET)
- B3 FUTURE PATH

ARCHITECTURAL ELEMENTS

- C1 RESTROOMS
- C2 PICNIC SHELTER

PARK ELEMENTS

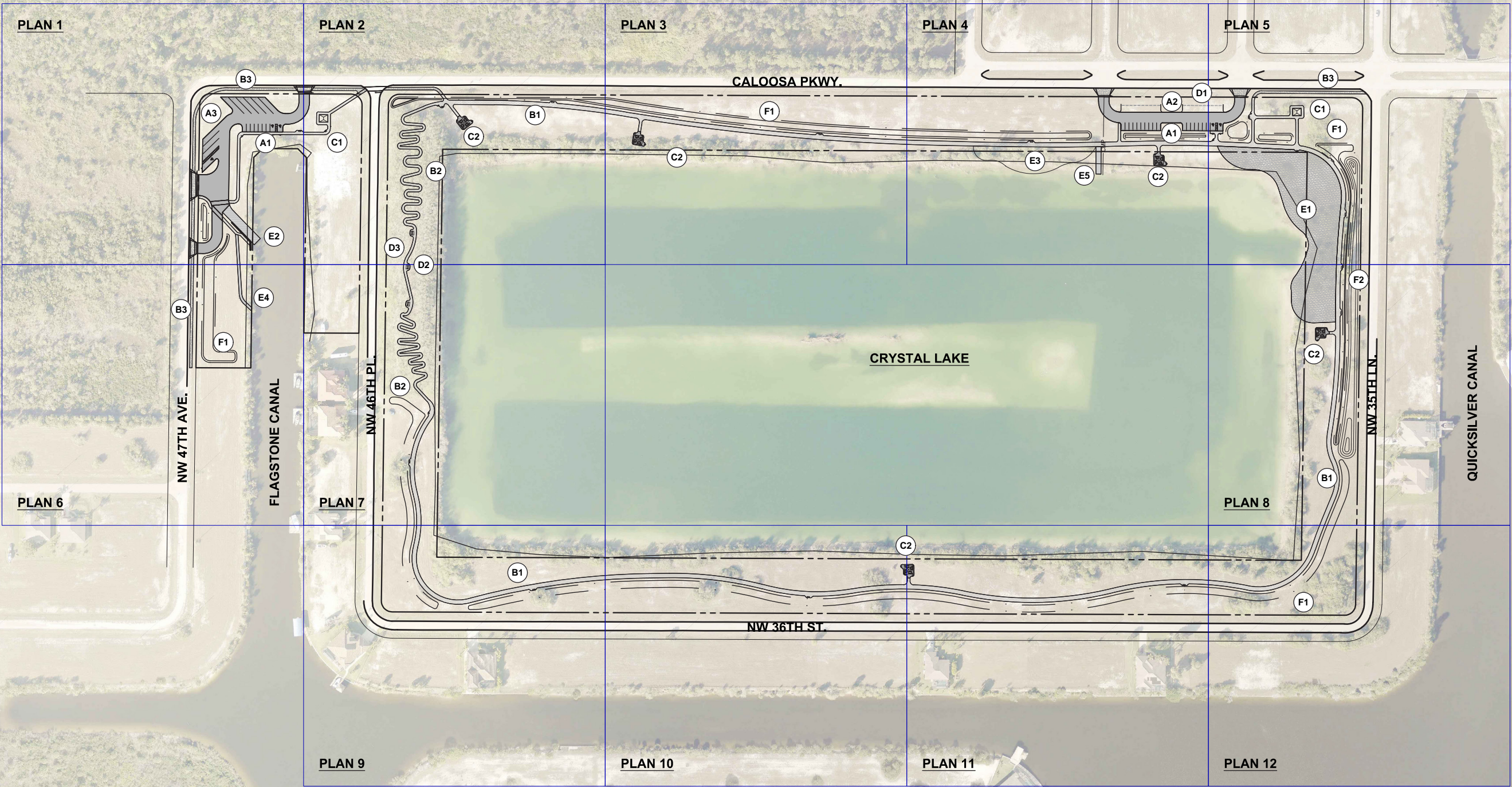
- D1 FOOD TRUCK AREA
- D2 SUN SHELTERS
- D3 HILL OVERLOOK

WATER ELEMENTS

- E1 BEACH
- E2 BOAT LAUNCH RAMP
- E3 SCUBA DIVING AREA
- E4 KAYAK LAUNCH
- E5 EMERGENCY BOAT LAUNCH RAMP

LANDSCAPE ELEMENTS

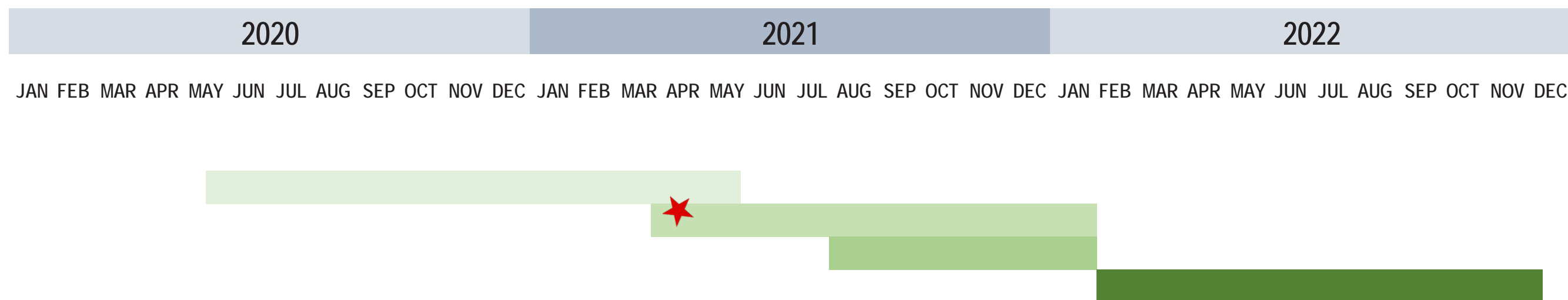
- F1 STORMWATER AREA
- F2 LANDSCAPE BERM





Crystal Lake Park

- Design
- Permitting
- Bidding
- Construction



★ PROGRESS

PLAN 1

PLAN 2

LEGEND

VEHICULAR USE ELEMENTS

- (A1) PAVED PARKING
- (A2) GRASS OVERFLOW PARKING

PEDESTRIAN ELEMENTS

- (B1) MULTI-USE PATH
- (B2) WALKING PATH

ARCHITECTURAL ELEMENTS

- (C1) RESTROOMS
- (C2) PICNIC SHELTER
- (C3) PARK ID SIGN

PARK ELEMENTS

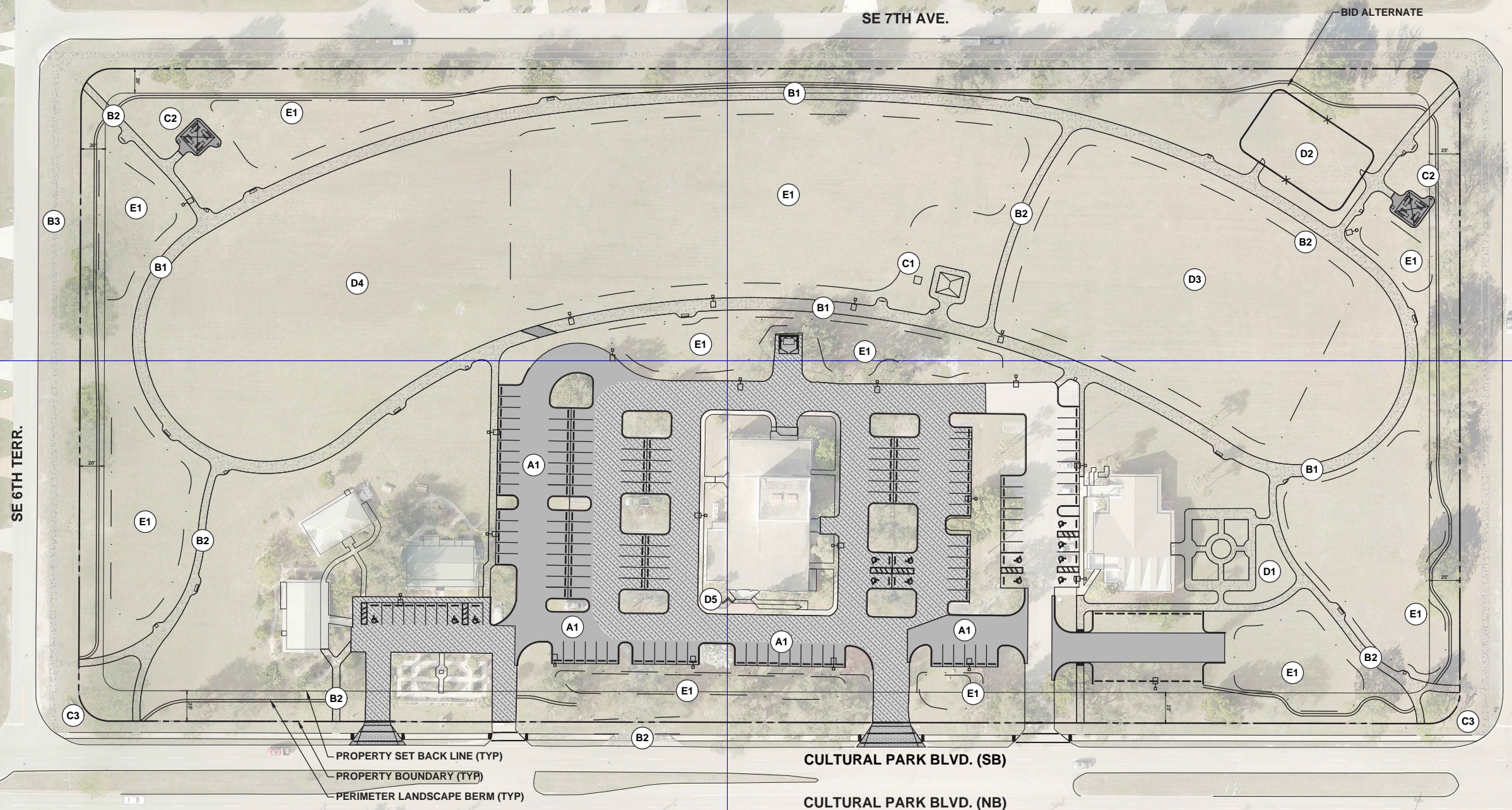
- (D1) OUTDOOR EXHIBIT SPACE
- (D2) PLAYGROUND
- (D3) MULTI-PURPOSE OPEN SPACE
- (D4) EVENT STAGE AREA
- (D5) OUTDOOR SEATING

LANDSCAPE ELEMENTS

- (E1) STORMWATER AREA

OTHER

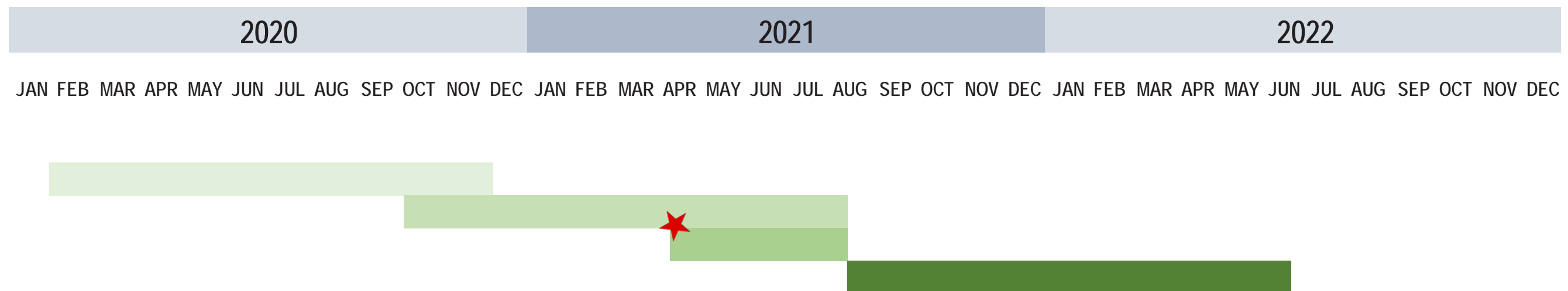
- (F1) DUMPSTER
- (F2) EXISTING LOADING DOCK



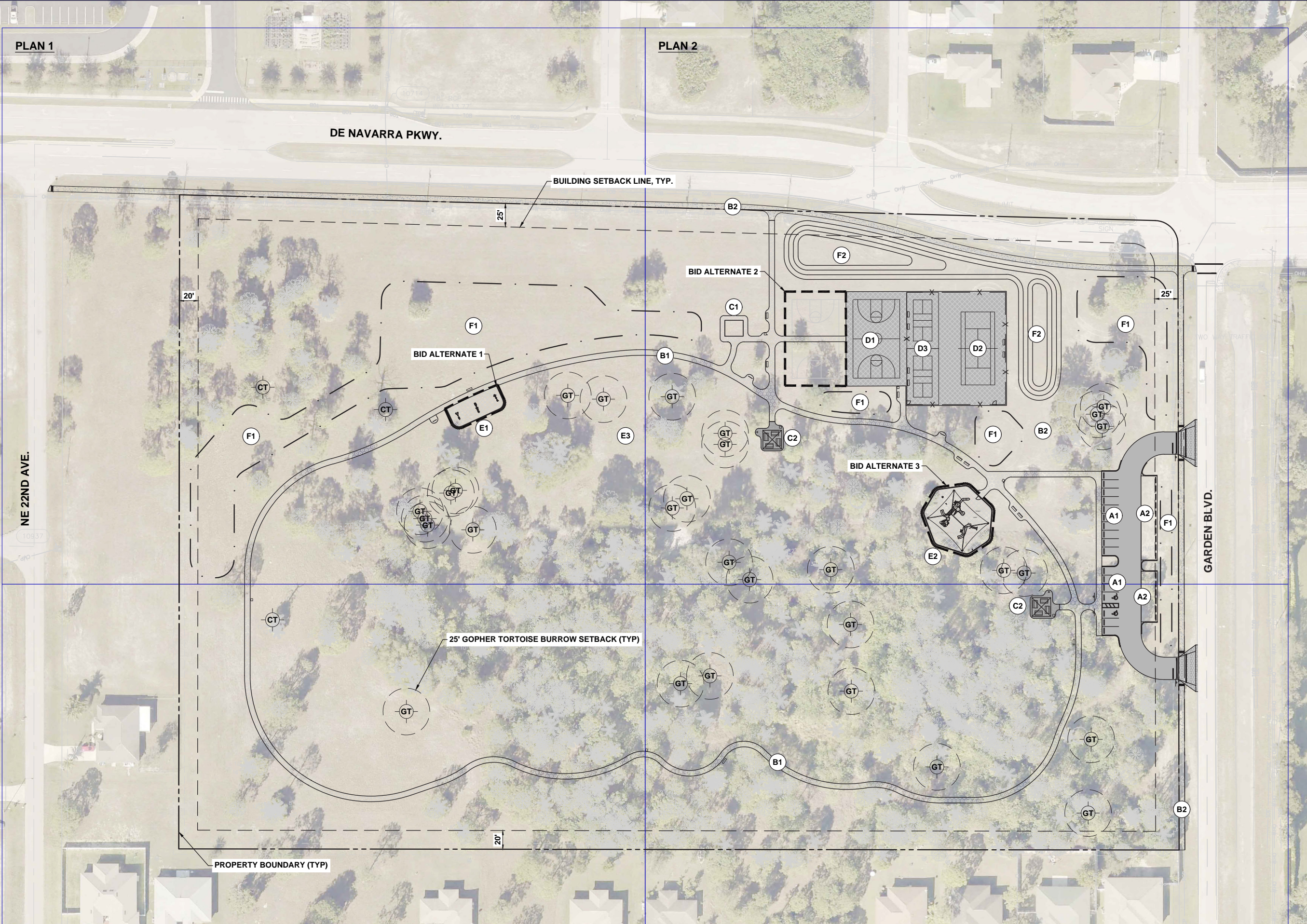


Cultural Park

Design
 Permitting
 Bidding
 Construction



★ PROGRESS



LEGEND

VEHICULAR USE ELEMENTS

- A1 PAVED PARKING
- A2 GRASS OVERFLOW PARKING

PEDESTRIAN ELEMENTS

- B1 WALKING PATH
- B2 FUTURE PATH

ARCHITECTURAL ELEMENTS

- C1 RESTROOMS
- C2 PICNIC SHELTER

SPORT COURTS

- D1 BASKETBALL COURTS
- D2 TENNIS COURT
- D3 PICKLEBALL COURTS

PARK ELEMENTS

- E1 FITNESS STATIONS
- E2 PLAYGROUND
- E3 MULTI-PURPOSE OPEN SPACE

LANDSCAPE ELEMENTS

- F1 STORMWATER AREA
- F2 LANDSCAPE BERM

ENVIRONMENTAL ELEMENTS

- CT CAVITY TREE LOCATION
- GT GOPHER TORTOISE BURROW LOCATION

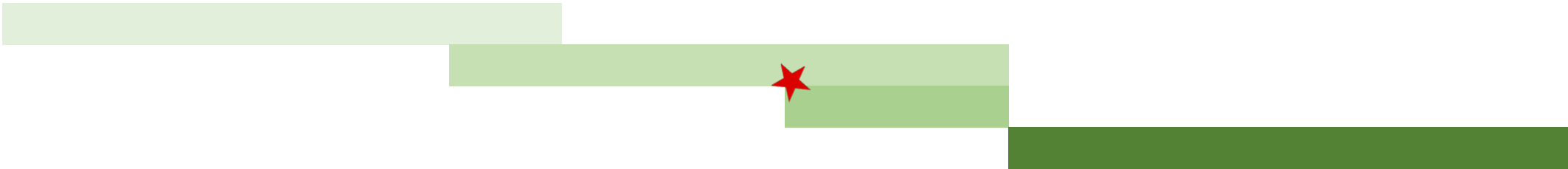




JAN FEB MAR APR MAY JUN JUL AUG SEP OCT NOV DEC JAN FEB MAR APR MAY JUN JUL AUG SEP OCT NOV DEC JAN FEB MAR APR MAY JUN JUL AUG SEP OCT NOV DEC

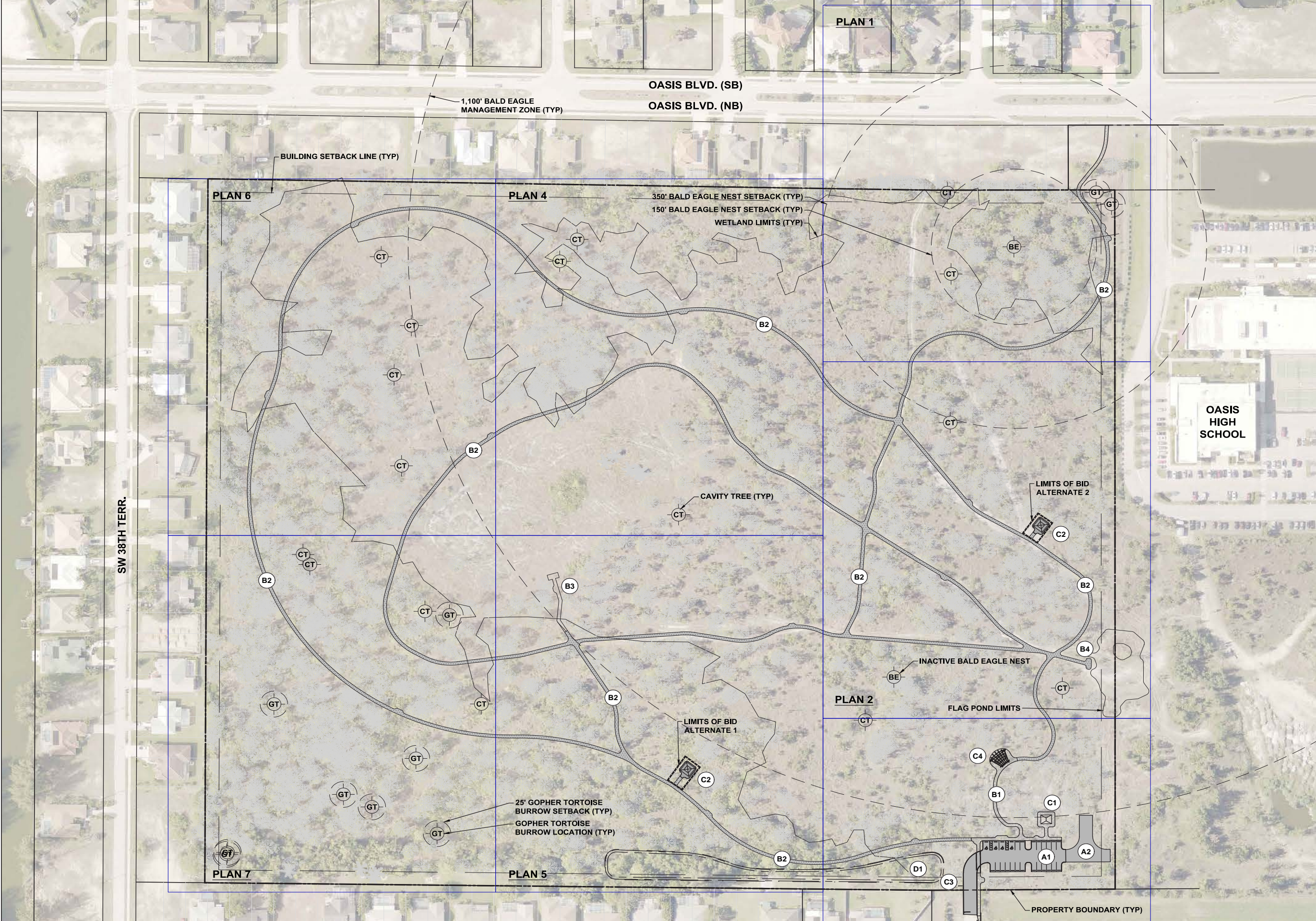
Gator Circle Park

- Design
- Permitting
- Bidding
- Construction



★ PROGRESS





LEGEND

VEHICULAR USE ELEMENTS

- A1** PAVED PARKING
- A2** FIRE TRUCK TURN-AROUND
- A3** CROSSWALK

PEDESTRIAN ELEMENTS

- B1** WALKING PATH
- B2** SHELL PATH
- B3** BOARDWALK
- B4** FLAG POND LOOKOUT

ARCHITECTURAL ELEMENTS

- C1** RESTROOMS
- C2** PICNIC SHELTER
- C3** PARK ID SIGN
- C4** OUTDOOR CLASSROOM

LANDSCAPE ELEMENTS

- D1** STORMWATER AREA

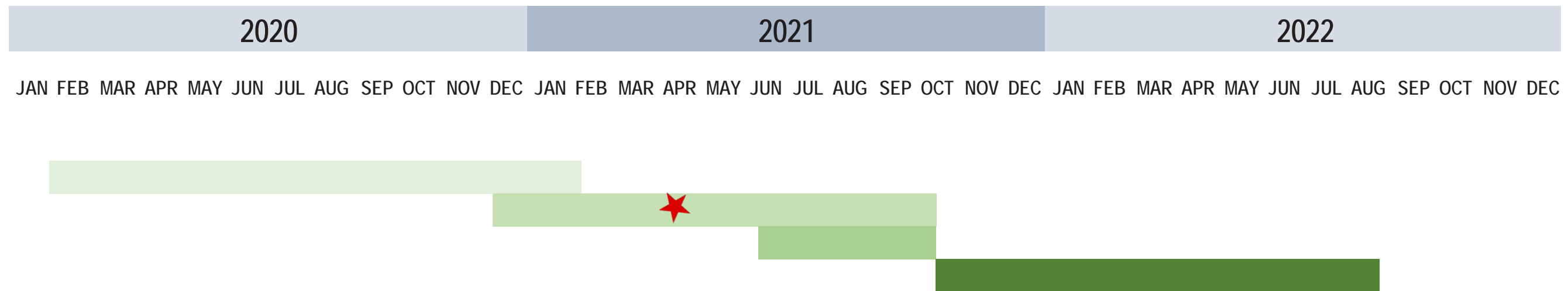
ENVIRONMENTAL ELEMENTS

- BE** BALD EAGLE NEST LOCATION
- CT** CAVITY TREE LOCATION
- GT** GOPHER TORTOISE BURROW LOCATION



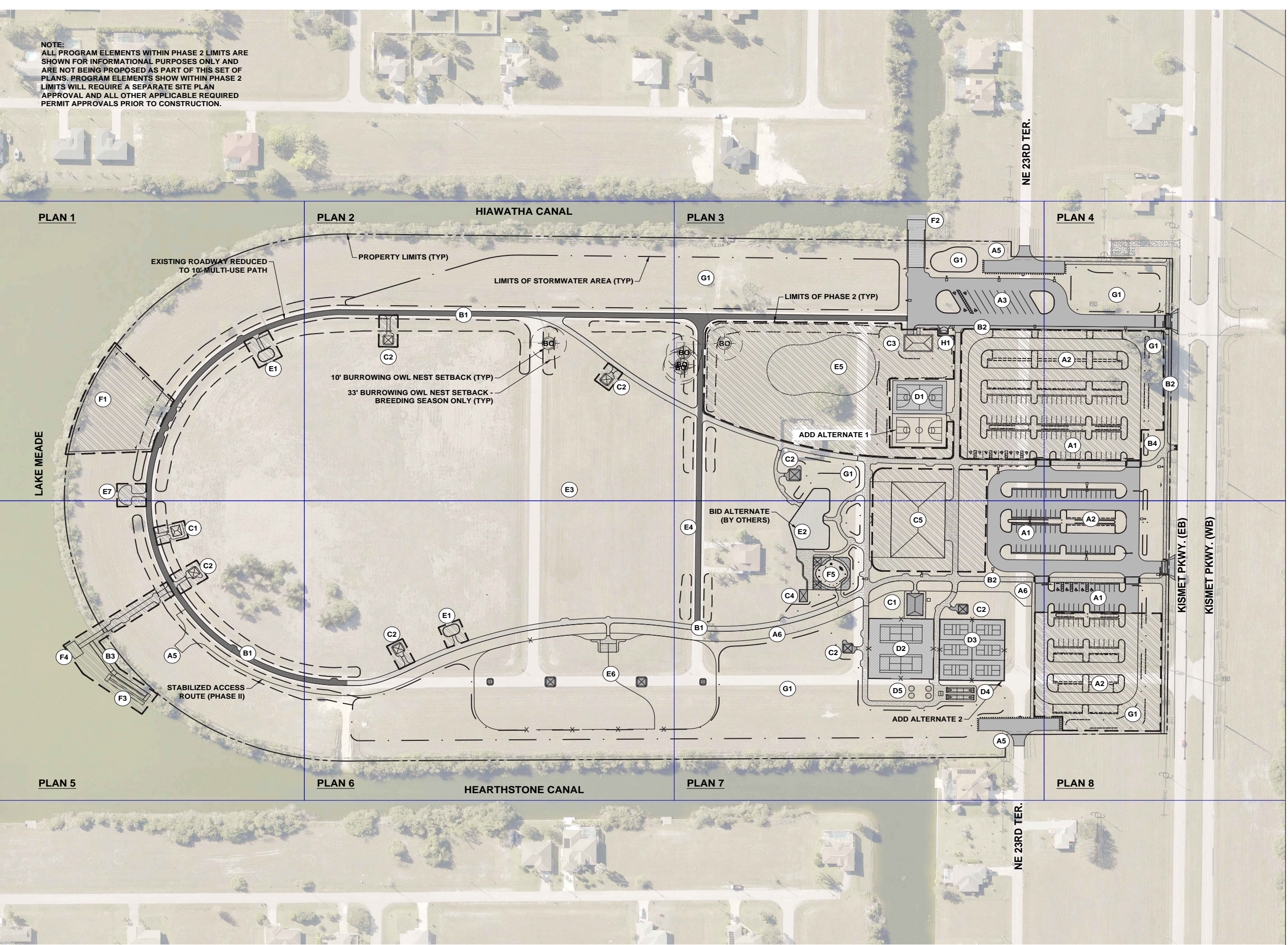
Joe Coviello Park

Design
 Permitting
 Bidding
 Construction



★ PROGRESS

NOTE:
ALL PROGRAM ELEMENTS WITHIN PHASE 2 LIMITS ARE
SHOWN FOR INFORMATIONAL PURPOSES ONLY AND
ARE NOT BEING PROPOSED AS PART OF THIS SET OF
PLANS. PROGRAM ELEMENTS SHOW WITHIN PHASE 2
LIMITS WILL REQUIRE A SEPARATE SITE PLAN
APPROVAL AND ALL OTHER APPLICABLE REQUIRED
PERMIT APPROVALS PRIOR TO CONSTRUCTION.



LEGEND

VEHICULAR USE ELEMENTS

- (A1) PAVED PARKING
- (A2) GRASS OVERFLOW PARKING
- (A3) BOAT TRAILER PARKING
- (A4) DROP-OFF AREA
- (A5) FIRE TRUCK TURN-AROUND
- (A6) STABILIZED ACCESS ROUTE

PEDESTRIAN ELEMENTS

- (B1) MULTI-USE PATH
- (B2) WALKING PATH
- (B3) BOARDWALK
- (B4) CONNECTION TO FUTURE SUNTRAIL

ARCHITECTURAL ELEMENTS

- (C1) RESTROOMS
- (C2) PICNIC SHELTER
- (C3) STORAGE BUILDING
- (C4) PUMP HOUSE FOR SPLASH PAD
- (C5) RECREATION CENTER

SPORT COURTS

- (D1) BASKETBALL COURTS
- (D2) TENNIS COURTS
- (D3) PICKLEBALL COURTS
- (D4) SHUFFLEBOARD COURTS
- (D5) CORNHOLE

PARK ELEMENTS

- (E1) FITNESS STATIONS
- (E2) PLAYGROUND
- (E3) MULTI-PURPOSE OPEN SPACE
- (E4) EVENT STAGE AREA
- (E5) SKATE PARK
- (E6) DOG PARK
- (E7) LAKE MEADE OVERLOOK

WATER ELEMENTS

- (F1) BEACH
- (F2) BOAT LAUNCH RAMP
- (F3) FLOATING DOCK
- (F4) FISHING PIER
- (F5) SPLASH PAD

LANDSCAPE ELEMENTS

- (G1) STORMWATER AREA

LANDSCAPE ELEMENTS

- (H1) DUMPSTER

ENVIRONMENTAL ELEMENTS

- (BO) BURROWING OWL LOCATION
- (GT) GOPHER TORTOISE LOCATION







JAN FEB MAR APR MAY JUN JUL AUG SEP OCT NOV DEC JAN FEB MAR APR MAY JUN JUL AUG SEP OCT NOV DEC JAN FEB MAR APR MAY JUN JUL AUG SEP OCT NOV DEC

Lake Meade Park

- Design
- Permitting
- Bidding
- Construction



★ PROGRESS

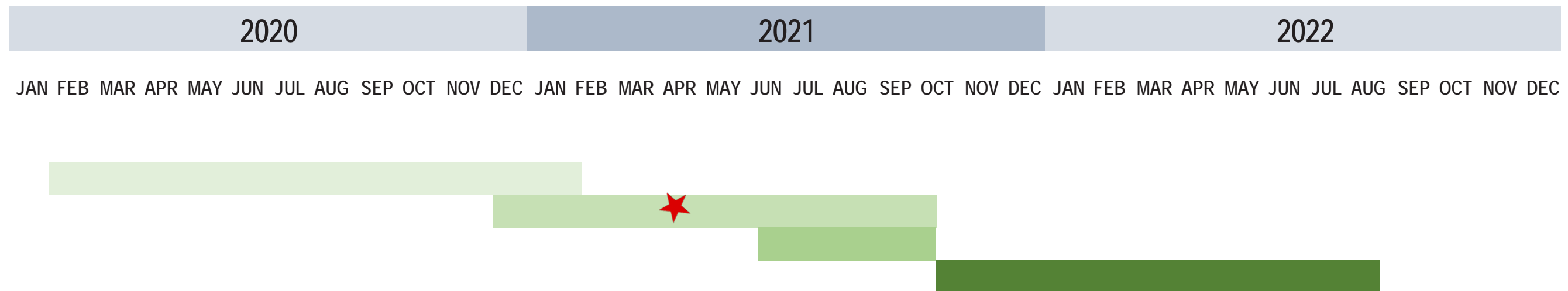




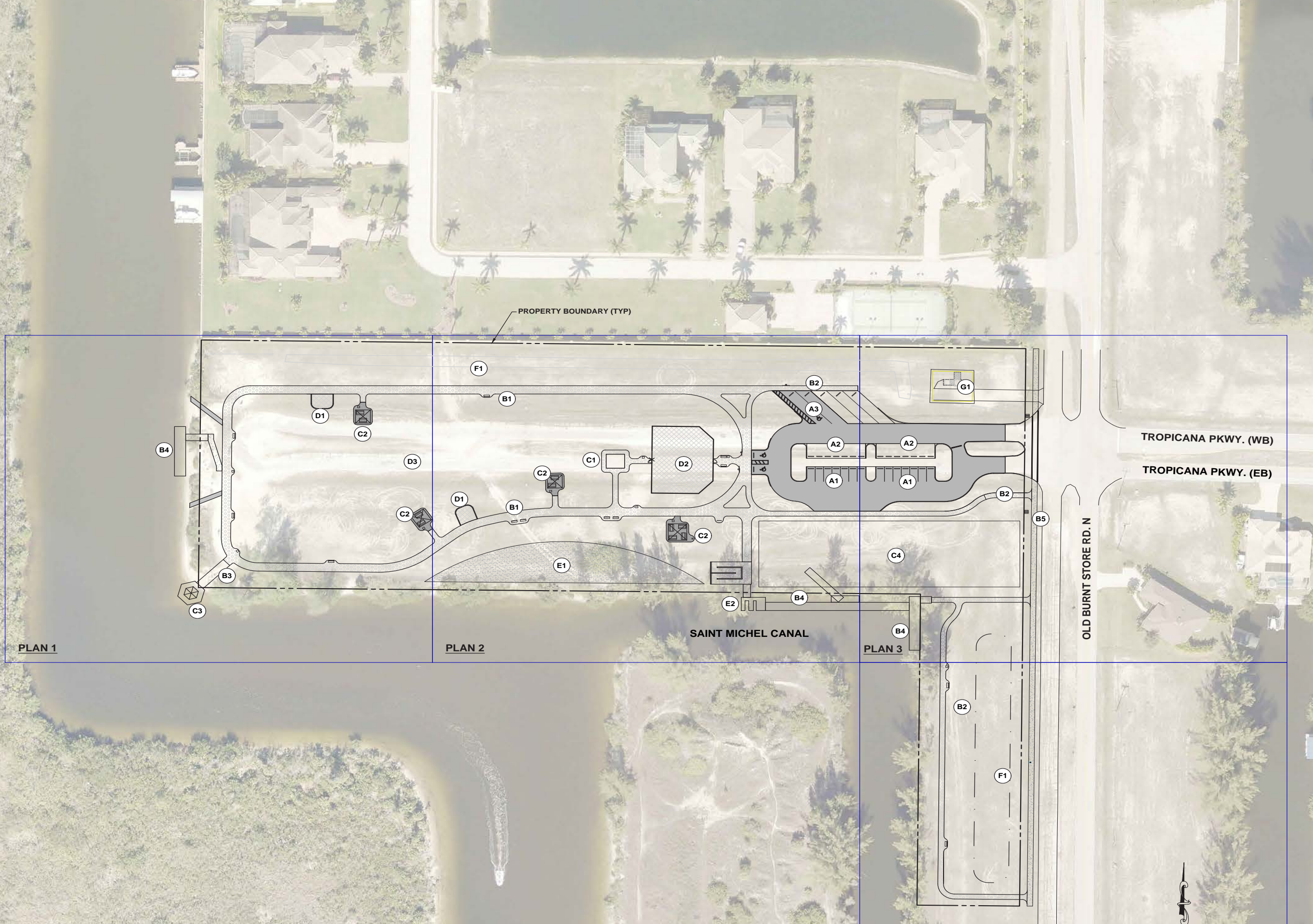


Sands Park

Design
 Permitting
 Bidding
 Construction



★ PROGRESS



LEGEND

VEHICULAR USE ELEMENTS

- A1** PAVED PARKING
- A2** GRASS OVERFLOW PARKING
- A3** BOAT TRAILER PARKING

PEDESTRIAN ELEMENTS

- B1** MULTI-USE PATH (10 FEET)
- B2** WALKING PATH (6 FEET)
- B3** BOARDWALK
- B4** FLOATING DOCK
- B5** FUTURE PATH

ARCHITECTURAL ELEMENTS

- C1** RESTROOMS
- C2** PICNIC SHELTER
- C3** OBSERVATION PAVILION
- C4** FUTURE LEASABLE SPACE (0.5 ACRE)

PARK ELEMENTS

- D1** FITNESS STATIONS
- D2** PLAYGROUND
- D3** OPEN SPACE

WATER ELEMENTS

- E1** BEACH
- E2** KAYAK LAUNCH RAMP

LANDSCAPE ELEMENTS

- F1** STORMWATER AREA

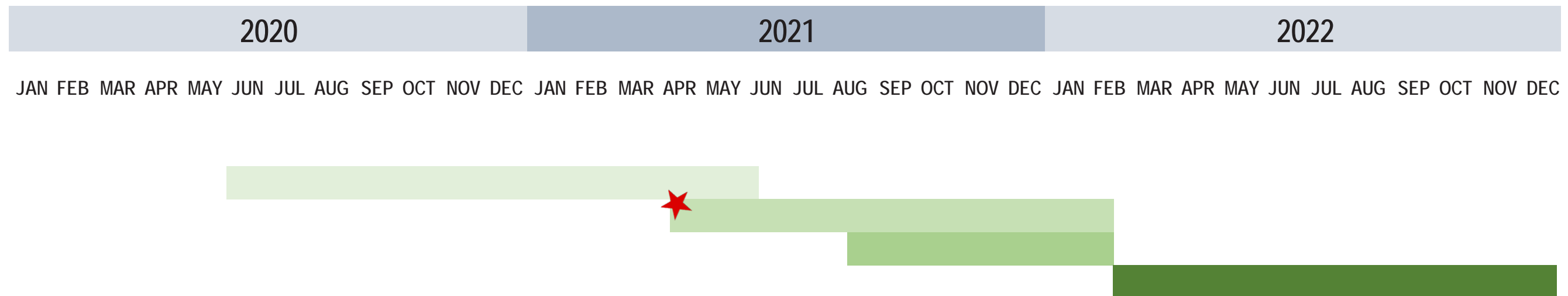
OTHER

- G1** EXISTING LIFT STATION



Tropicana Park

Design
Permitting
Bidding
Construction



★ PROGRESS